



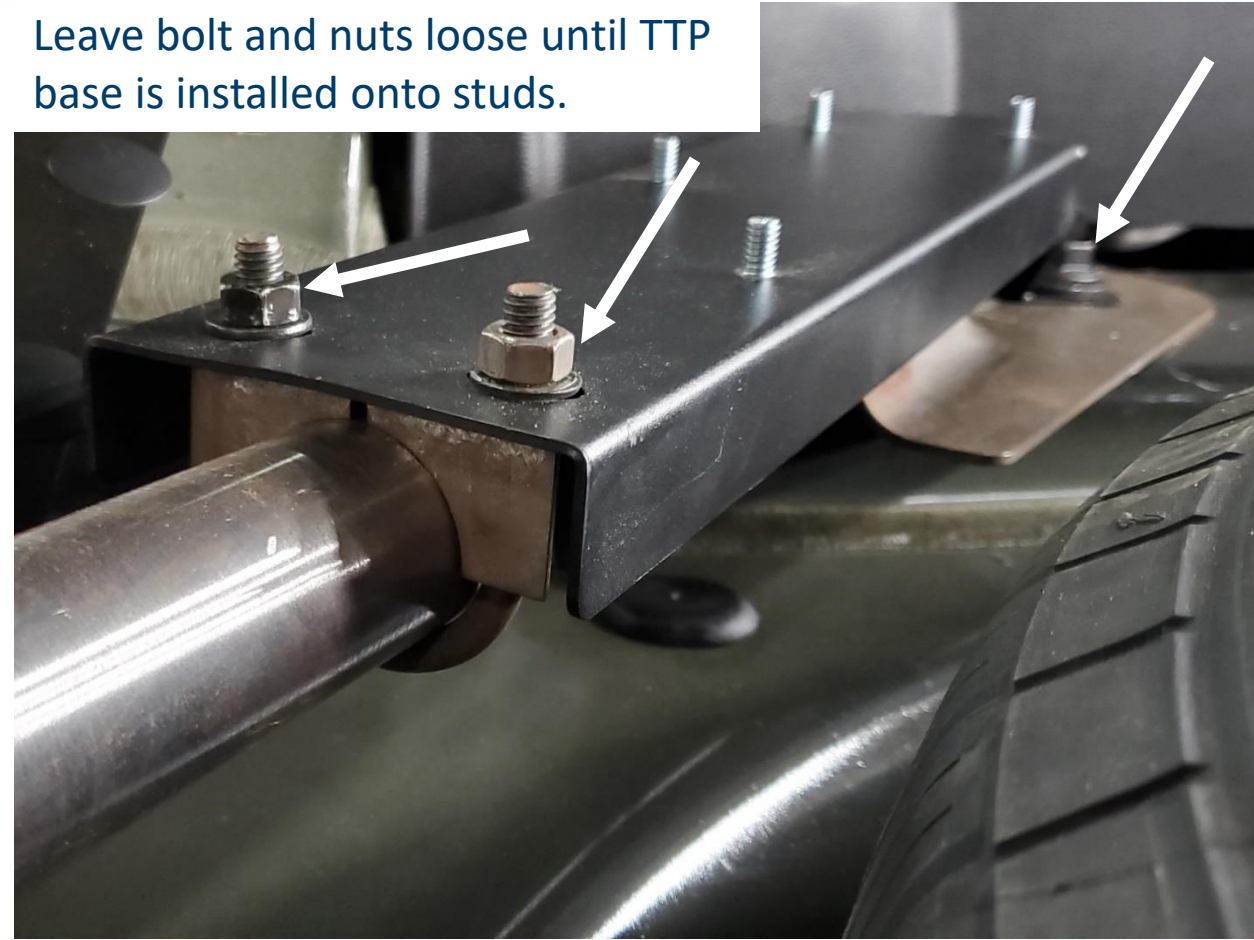
# 2020 Interceptor Utility rear





# TTP bracket alignment

Leave bolt and nuts loose until TTP base is installed onto studs.



Once the TTP is lined up with the studs, tighten hardware.

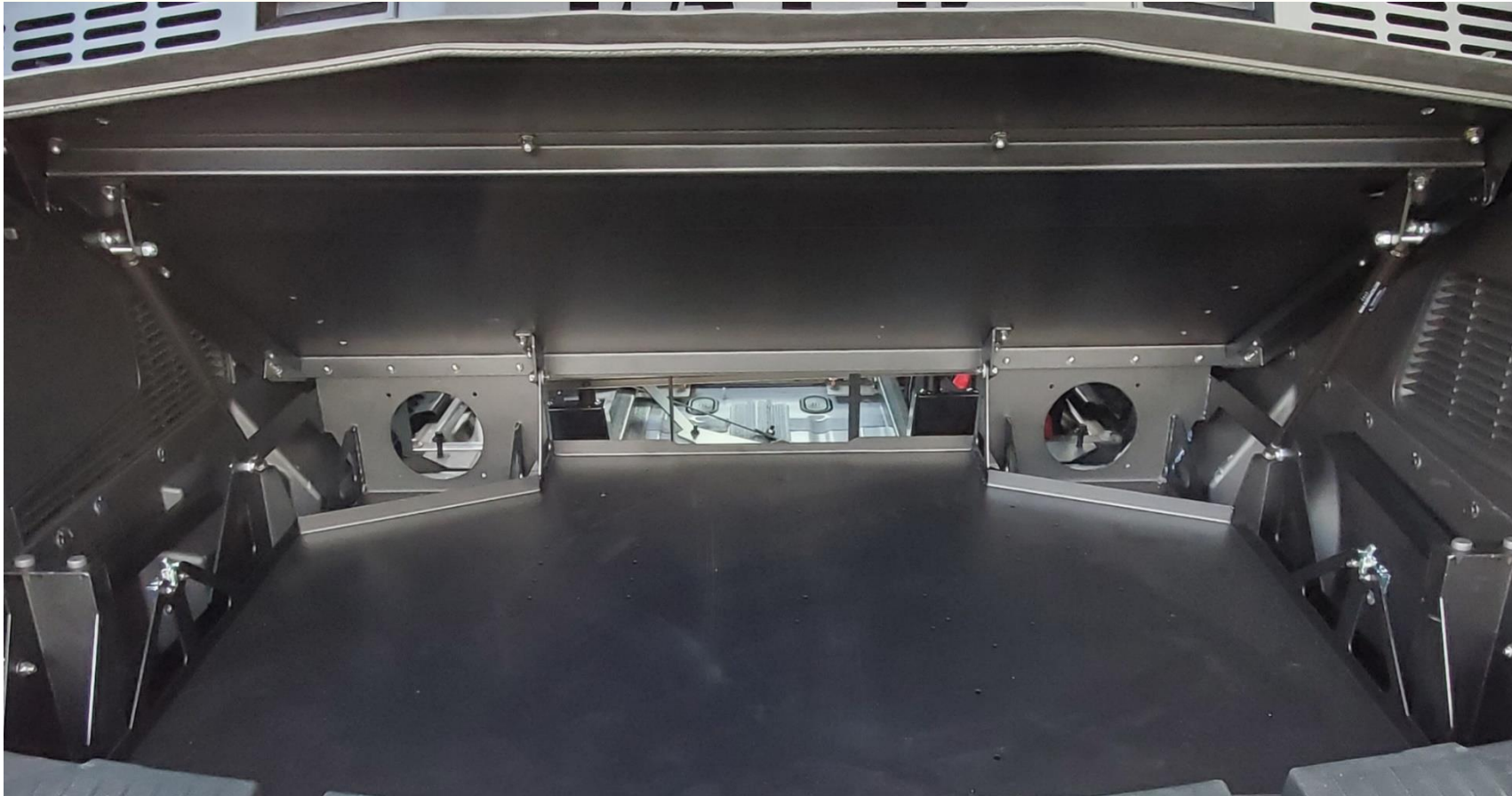




The TTP trays come with a prop rod to support the tray when accessing the spare or wiring electronics. While the tray does come with 80lb or 200lb shocks, we added an additional level of safety.

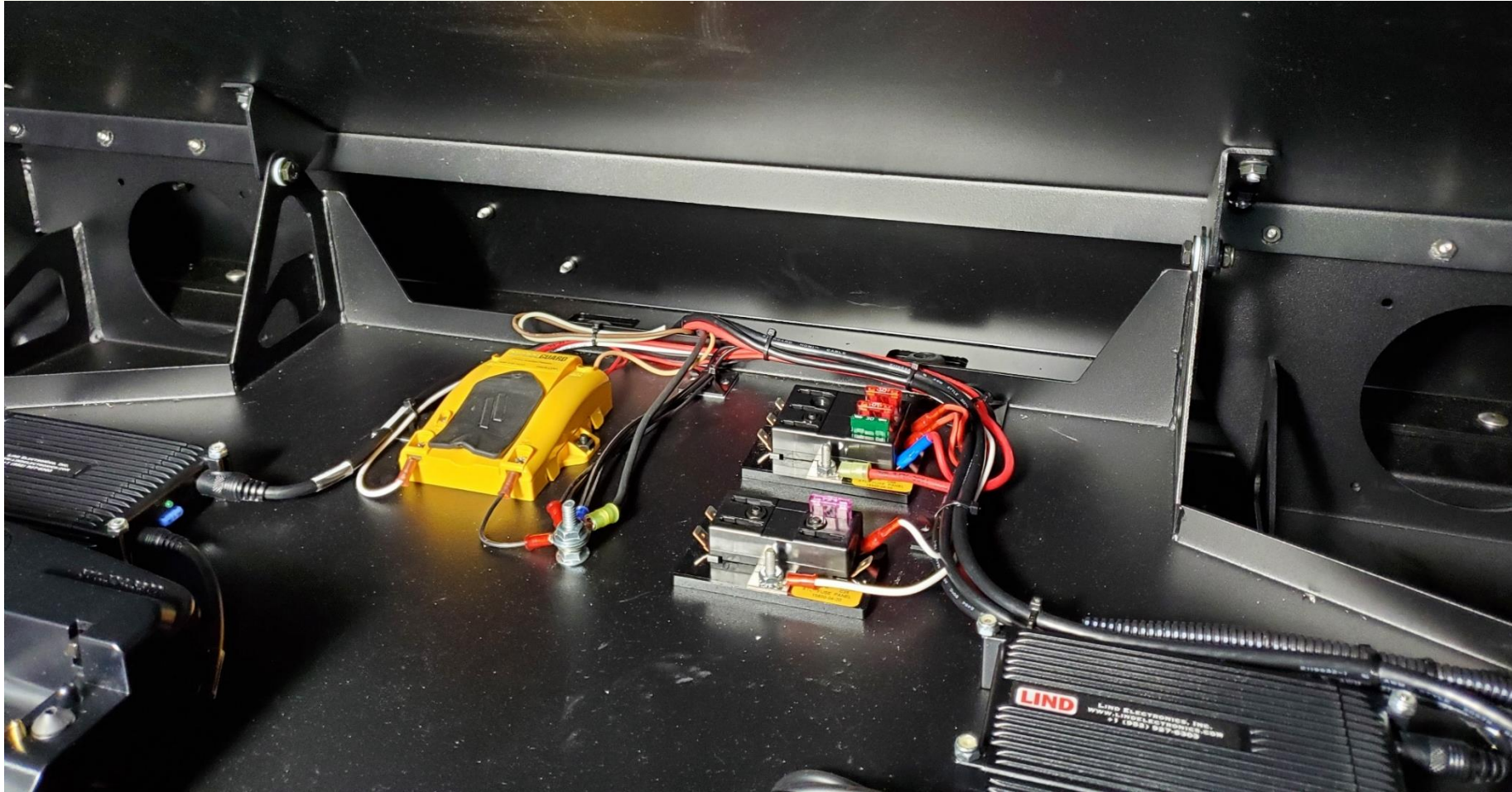


The prop rod is part of the rear mounting platform and is factory installed on every mount. Lift up the tray and slide the rod into place. Every tray comes with two rods, one on each side.



When adding the TTP-4 to the TTP-1201, it is important to loosely install the tray first. The forward mounting brackets and rear latch brackets are slotted. When installing, leave all the nuts loose until you are able to close the tray and confirm alignment. If you are receiving complaints about the tray not closing correctly, the issue is more than likely that the latches were not lined up properly during install. An easy fix that can be done at any time, even after equipment is installed.

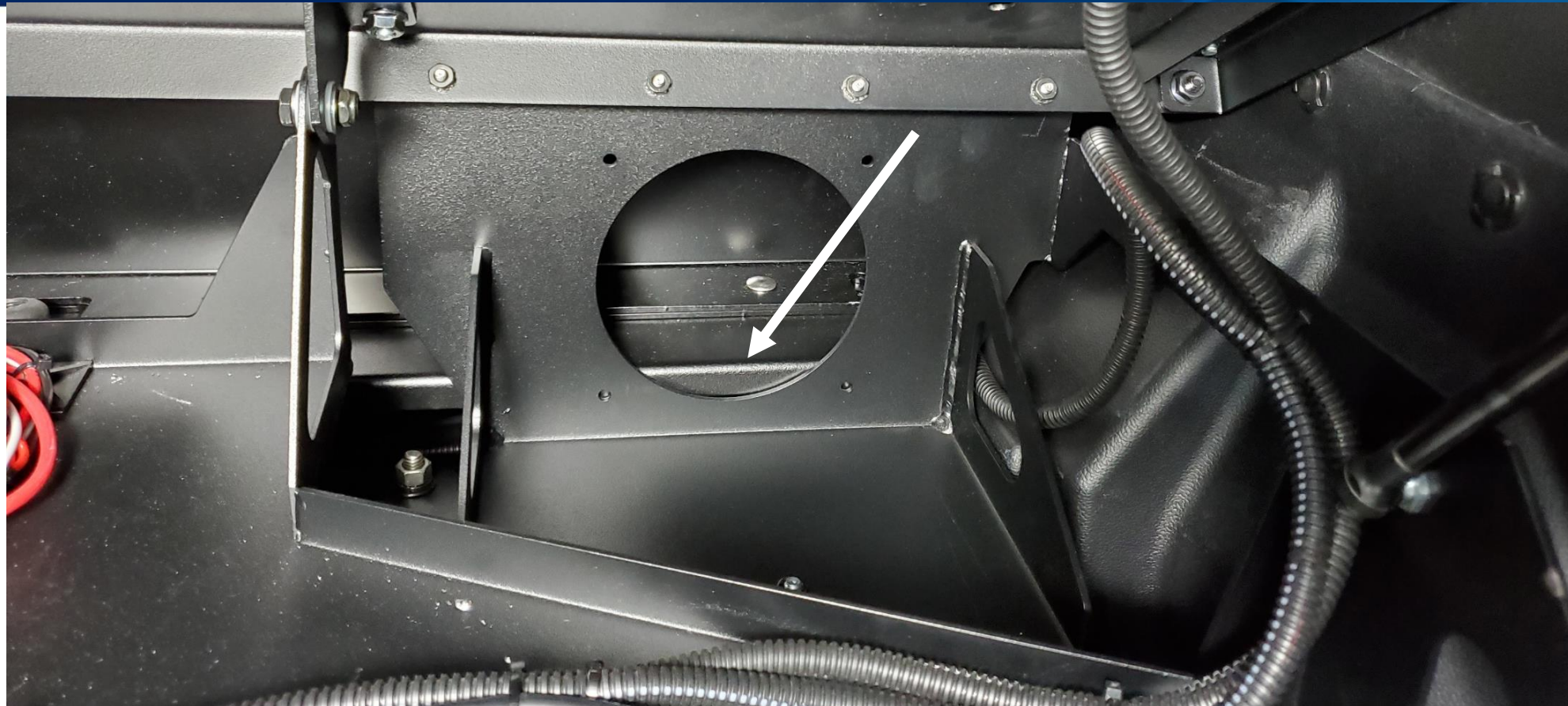




Wire management is important when wiring an emergency vehicle. With the C-TTP-INUT-4, we provide a large opening at the front of the tray to allow even the most elaborate wiring setup sufficient space.



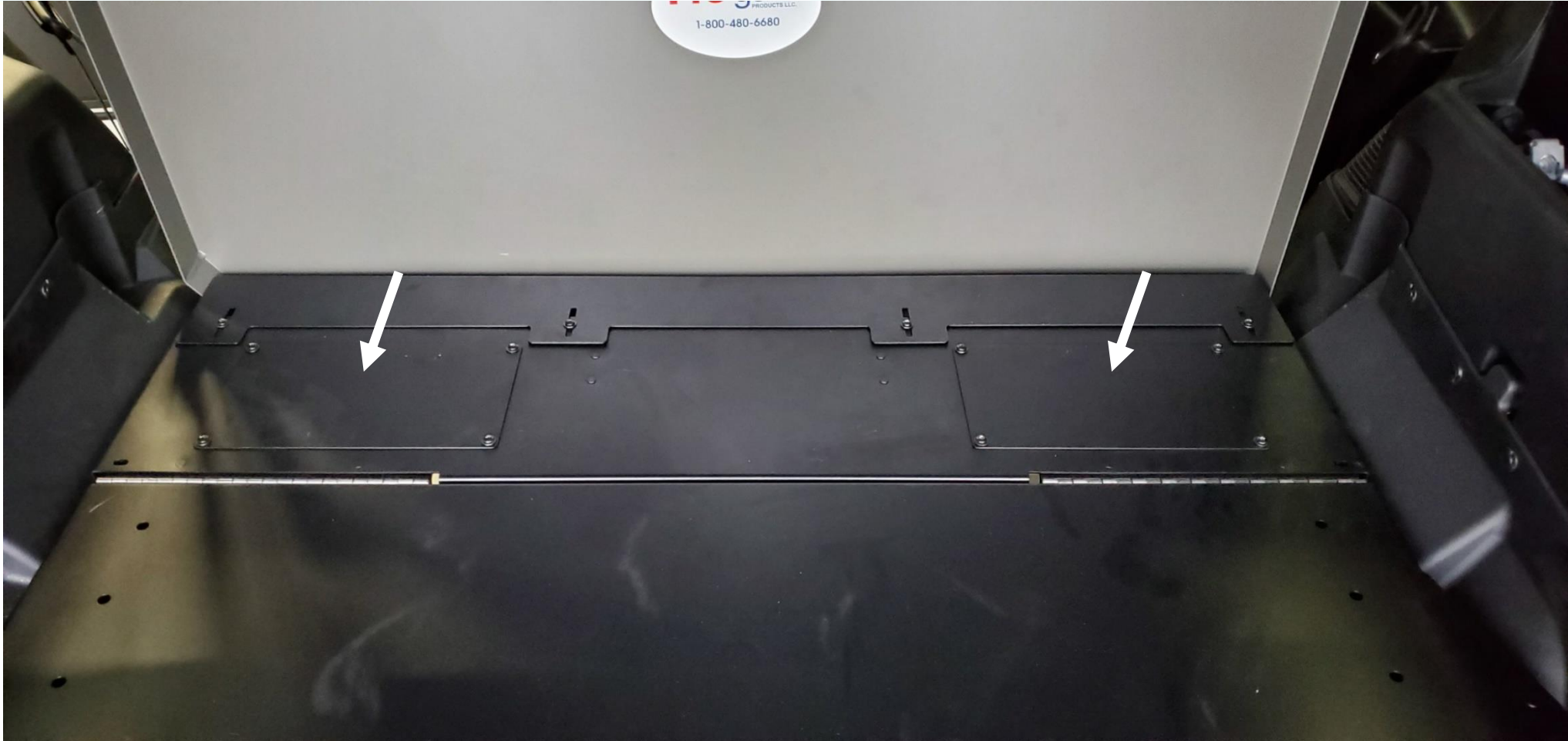
# HAVIS TTP alignment with rear floor bracket



Here we are showing the TTP-1201 alignment with the rear floor bracket used on the K9-F28-PT and K9-F28-XL. When installing a K9, it is best to leave the rear floor bracket as close to the front of the vehicle as possible. The rear floor bracket has slots for adjustment; this allows a lot of flexibility when installing. If adding the fan option, mount the fan on the inside of the TTP opening.



## Access covers for TTP-1200/1201



The TTP-1200 and TTP-1201 come with easily removable access to covers. These allow simple accessibility to the OEM installed Cencom or power junction.





## Cargo barrier

This is our CBR-INUT-1 cargo barrier. It is available for the Pro-Gard and Setina rear partition.

The recommended TTP setup for this is the C-TTP-INUT-1200.



It attaches to factory mounting points to provide a sturdy, no-drill solution to keep your truck equipment safe!





## SBX-5001, SBX-5007



The SBX-5001 is our mounting solution for the K9-F28-XL and K9-F28-PT. It is a no-drill mounting option for the SBX-1000 series.



The SBX-5007 is our mounting solution for the K9-F28-1. It is a no-drill mounting option for the SBX-1000 series. Its low profile design allows for multiple boxes to be stacked without compromising rear visibility.





## SBX-5004, SBX-5006



The SBX-5006 is our 12.5" raised mounting solution for a single elevated box providing maximum storage underneath.



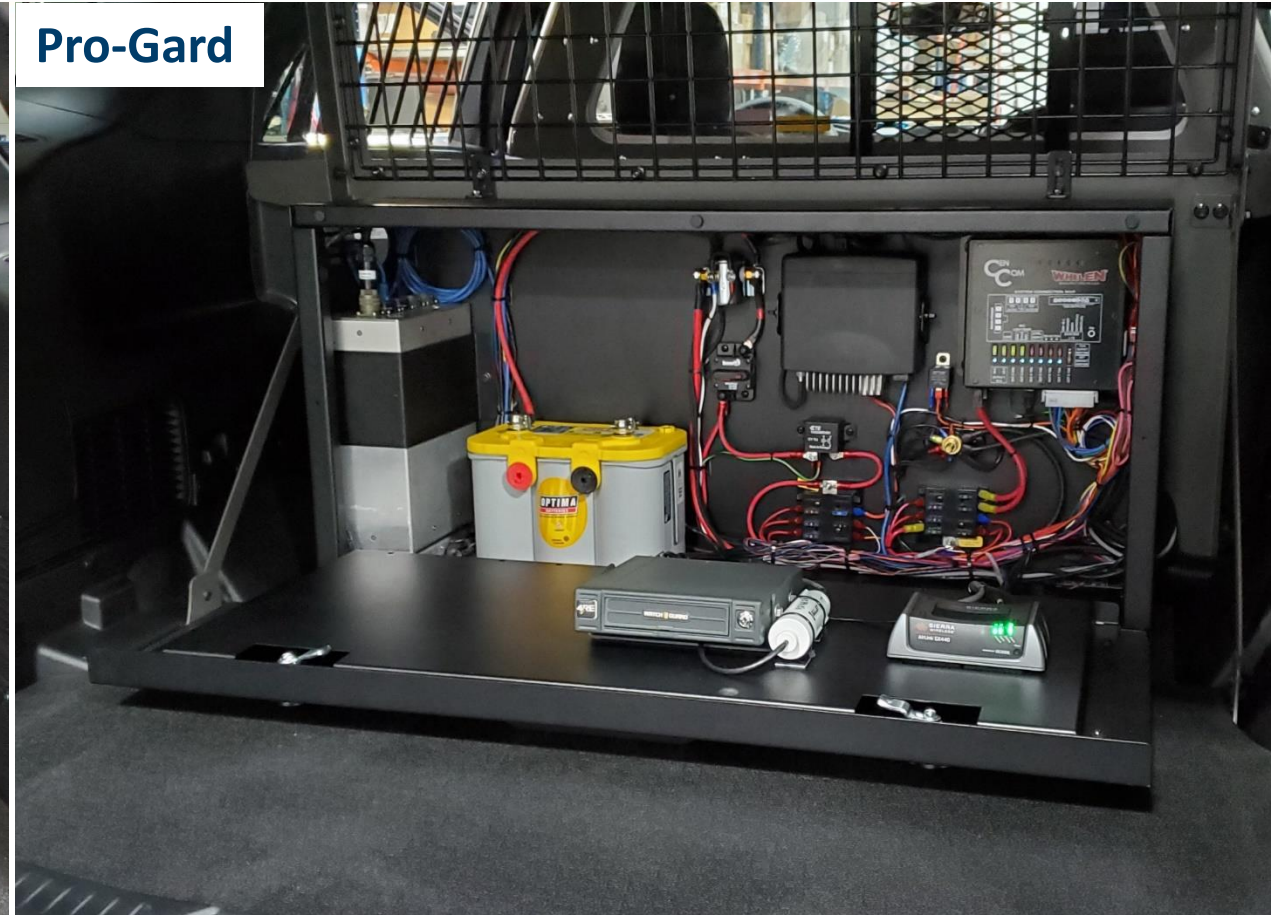
The SBX-5004 is our 4" raised mounting solution. Ideal for stacking multiple boxes. All the SBX-5000 series mounts allow for the OEM floor to stay in place and easy access to the spare tire.



Setina



Pro-Gard



For customers who still prefer the C-SBX-101, we offer a mounting solution for this too. This mounting base can support the C-SBX-101 freestanding, or attach it to the partition of your choice.





When mounting the SBX-1000 series boxes on top of the C-TTP-INUT-1200/1201, take into consideration the angle the tray will open and what is mounted behind it. If adding a box to the top of the TTP, we recommend only using a single box. Stacking multiple boxes will cause the tray not to open fully before coming into contact with the interior trim as well as the rear wall of the K9 or partition insert.



## TTP - Cargo Plates

- 2 heights to address different mounting needs
  - TTP-1200
    - Flush mount to floor
    - Best for top mounting
  - TTP-1201
    - Raised for additional mounting space above spare tire
  - TTP-4
    - Equipment mounting tray for use with TTP-1201
- 80 pound or 200 pound lift strut options
- Filler panels for different partition configurations

## **SBX - Modular Storage Drawers**

- Single footprint for easy stacking
- Multiple size, lock and topper options
- Additional accessories available

## **CBR - Cargo Barrier**

- Creates secure rear storage area
- Eliminates need for rear window guards/bars, improving vision



1

## Havis Website

Visit to find everything Havis.  
<https://customers.havis.com/>

2

## Havis Newsletters

Havis publishes the Product Weekly each week which provides important product information like new, coming soon and discontinued products. Contact your RSM to be added to our distribution list.

3

## Social Media

Follow us:

LinkedIn - @Havis,Inc  
Facebook - @havisinc  
Instagram - @Havis\_inc  
Twitter - @havisinc

Hashtags:

#HavisEquipped  
#HavisConnected  
#HavisMustHaves

4

## Contact Information

Jeff Tripp, Fleet Product Manager  
(E): [jtripp@havis.com](mailto:jtripp@havis.com)

Dave Phillion, Technical Specialist  
(E): [dphillion@havis.com](mailto:dphillion@havis.com)